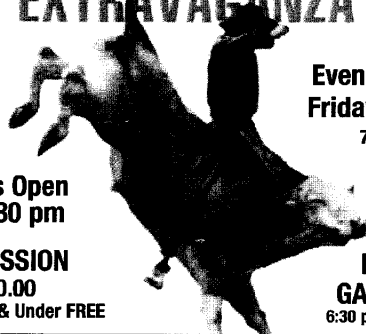


THRU TUBING SOLUTIONS

is proud to present the

13th Annual
D&R

BULL RIDING EXTRAVAGANZA



Evening Show
Friday June 17
7:30 pm

Gates Open
at 6:30 pm

ADMISSION
\$20.00

Children 12 & Under FREE

BEER
GARDENS
6:30 pm - 9:30 pm

brought to you by 3D Bullriding Inc.

BOUNTY BULL SPONSOR
NUFARM/NOVOZYMES

INTERMISSION
Greased Pig

By G.M. SALLIS
STEAMING

2011 BULL RIDING SPONSORS

CHUTE SPONSORS

High Caliber Pressure Services G. Richard Drilling
Triple T Trucking & DGD Contracting Ltd.
Monsanto Woodland Enterprises Bermar Rewind

BUCKLE SPONSOR

Four L Farms

GOLD SPONSORS

County Disposal Menzies Printers Meyers Norris Penny
Hanna Oil & Gas Basnett Trucking
Shuttle Valve Servicing Ltd. Garry's Trucking
Tansem Holdings Ltd. HSE Integrated
CSS Midstream Services

SILVER SPONSORS

Peace Country Memorials Bayer Crop Sciences
MI Swaco MSS Trucking Syngenta

BRONZE SPONSORS

Foote Trucking Windsor Ford

NAME THE BULL

Windy Creek Construction Penguin Dairy Drive Inn POS
Underground Enterprises Discovery Vacuum Services Ltd.
VJV Auction Triple T Trucking Bee Gees Contracting
Jody Hoff Enterprises Inc. Laroche Oilfield Service
Brandon Brown Service Saddle River Track Hoe Services
MJ Gulick Consulting GM Sallis Steaming
High Caliber Pressure Services Dr. Eva Kitagawa

EXECUTIVE & DIRECTORS

Chairperson Allan Connell780-694-2503
Vice-Chairperson Bev Wells780-694-3747
Secretary Stacey Pelland780-694-2080
Treasurer Tara Sallis780-694-2377

Antique Machinery Wayne Grusie780-694-3947
Rhonda Bohnke . . .780-694-2584
Arm Wrestling Ron Deley780-864-2495
BBQ Supper Janet Sinkwich . . .780-765-3315
Beer Garden Cathy Leriger780-694-3787
Booths Joyce Ranestad . . .780-694-2528
Lynnette Peebles . .780-694-2117
Bull Riding Lynn McDonald . . .403-556-6184
Canadian Plowing Council Lenore Mueller . . .780-694-2573
Canvassing Cari-Lyn Christensen 780-765-2567
Children's Program Echo Carroll780-694-2816
Complex Terry Blake780-694-2712
Exhibits Rhonda Fry780-402-9397
Gate Kenton Leriger780-694-3787
Doug Zamorsky . . .780-694-2444
Lenore Mueller . . .780-694-2573
Grounds Lynn Connell780-694-2503
Gymkhana Kathy Miles780-567-2499
Headquarters Neil Fowler780-694-2447
Heavy Horse Events Bud Sather780-694-3927
Horse Plowing Events Lenore Mueller . . .780-694-2573
Horseshoe Pitching Alan Laursen780-694-2272
Horse Show Bev Wells780-694-3747
Logging Events Jade Denis780-864-3724
Oldtime Bands Sharon Laughey . . .780-694-3070
Publicity & Publication Lynn Connell780-694-2503
Silent Auction Lynn Connell780-694-2503
Tickets Joyce Ranestad . . .780-694-2528
Tractor Plowing Wayne Wells780-694-2547
Tractor Pull Lois Klassen780-694-2727
Trade Show Harvey Laughey . . .780-694-3070
Transportation

If you need further information on any of the events please
contact the DIRECTOR of that event.

Or visit our website:
www.wanham.org

Or write to:
Wanham Plowing Match, Wanham, AB T0H 3P0.

To contact HEADQUARTERS just prior to or during the match,
PHONE: 780-694-2233

2011 WANHAM PLOWING MATCH

TRACTOR PLOWING

1. ****Ken Sargent Event (Open)** 8:00 am, Saturday
 **Open to all plowers using a conventional plow, 2 or more furrows opening split required. Plowed in stubble.
2. ****GPRC Fairview Campus Event (Sr.)** 1:00 pm, Saturday
 **Open to residents of Alberta 20 yrs or older, open to conventional plows, 2 or more furrows, 12" bottoms or larger, opening split required. Plowed in sod.
3. ****DBY Contractors Event (Jr.)** 1:00 pm, Saturday
 **Open to residents of Alberta 21 yrs or younger, open to conventional plows, 2 or more furrows, 12" bottoms or larger, opening split required. Plowed in stubble.
4. ****Royal Bank Event (Jr)** 10:00 am, Sunday
 **Open to residents of Alberta 21 yrs. or younger, open to conventional plows, 2 or more furrows, 12" bottoms or larger, opening split required. Plowed in sod.
5. ****Houlder Event (Sr.)** 10:00 am, Sunday
 **Open to residents of Alberta 20 yrs or older, open to conventional plows, 2 or more furrows, opening split required. Plowed in stubble.
6. ****R & M Desaulniers Farms Event (Sr.)** TBA
 **Open to residents of Alberta 20 yrs or older, open to reversible plows, 2 or more furrows, opening split required. Plowed in stubble.
7. ****Richardson Pioneer Event (Sr.)** TBA
 **Open to residents of Alberta 20 yrs or older, open to reversible plows, 2 or more furrows, opening split required. Plowed in sod.
8. ****Richardson Pioneer Event (Open)** TBA
 **Open to all plowers using a reversible plow, 2 or more furrows, opening split required. Plowed in stubble.

SPECIAL PLOWING AWARDS:

Best Crown, Best Finish, Best All Round Plower

Alberta Junior Champion

**Determined by highest points accumulated in:

3. DBY Contractors Event
4. Royal Bank Event

winner will receive a ONE-YEAR SCHOLARSHIP TO OLDS COLLEGE

Alberta Senior Championship/Conventional Plow

**Determined by highest points accumulated in:

2. GPRC Fairview Campus Event
5. Houlder Event

Alberta Senior Championship/Reversible Plow

**Determined by highest points accumulated in:

6. R & M Desaulniers Event
7. Richardson Pioneer Event
8. Richardson Pioneer Event

2011 WANHAM PLOWING MATCH

HORSE PLOWING

There is no entry fee for these events. All events to run each day.

Friday - Noon Saturday - Noon Sunday - 9:00 am - 2:00 pm

WALKING PLOW EVENT: Mens - Ladies - Students, Novice - Advanced

SULKY PLOW EVENT: Mens - Ladies - Students, Novice - Advanced

GANG PLOW EVENT and ADVANCED GANG PLOW EVENT

RULES FOR HORSE PLOWING:

Participants may only plow in one plot per event. All plots have a 1 hour time limit. Minimum depth is 4 inches. Once the contestant starts on the plot, he has to do all the adjustments or tripping himself; he is only allowed a helper to keep horses under control. Ladies, Students and Novice are allowed a helper at all times.

Alberta Horse Plowing Champion - determined by the highest points accumulated in: Advanced Walking Plow Event, Advanced Sulky Plow Event & Gang Plow Event. Must own & drive one team of your own horses.

SPECIAL HORSE PLOWING AWARDS:

Best Handled Team, Best Groomed Team, Best Crown, Best Finish, Top Junior Plower, Top Novice Plower, Best All Round Horse Plower - determined by the highest points accumulated for the plower in the three different types of plowing events, other than the AB Champion.

In the event of a tie in any of the above awards, the judges will make the final decision.

SPECIAL HORSE EVENTS

HEAVY HORSE SINGLE/TEAM LOG SKID Friday - 9:00 am

Pattern to be posted 1 hour prior to event. Penalties given for touching obstacles and for the number of inches you are out on your 1-2-3 foot stops.

HORSE PULL: Friday - 4:00 pm, Saturday - 6:30 pm, Sunday - 4:30 pm

We ask that all teams be weighed-in by noon on Friday so that we may determine their category and the date they will pull.

***Please note:** In order to compete in the Horse Pulls you must compete in one other working horse event.

HORSE SHOW

RULES & REGULATIONS

*Heavy Horse Registration - Saturday - 7:30 am/Start 8:00 am

Light Horse Registration - Saturday - 8:30 am/Start 9:00 am

It is recommended that all horses attending have a negative coggins test.

1. For information and entry forms, visit our website at www.wanham.org.
2. To have entry forms faxed to you, phone 780-694-2573.
3. Mail entries to Lenore Mueller. RR#1, Wanham, AB T0H 3P0.
4. Entries must be received by June 12, 2011.
5. The show committee reserves the right to combine, split, or cancel classes, as it deems necessary.
6. There will be no refund of entry fees except with doctor or veterinarian certificate.

* This is a non points event - open to all riders.

GYMKHANA

Sunday

Entries will be taken from 9:00 am to 10:00 am

Start time is 10:00 am

This is a non-point event and open to all riders.

For Information, contact Lenore Mueller at 780-694-2573

2011 WANHAM PLOWING MATCH

